

# FVT 600 / FVT 1200

## Film Viewing Tables

These versatile viewing tables for 35 mm and 16 mm are an excellent tool for a large number of applications at film archives, post production and printing facilities, etc.

Any film material, including negative, can be viewed even at very high speeds of up to 300 frames per second (16 mm: 400 fps). Studio-quality sound reproduction can be included for 35 mm and/or 16 mm as needed. A newly designed video scanning unit with an RGB light source allows color space adjustment and supports viewing negative film material.

The microprocessor-controlled drive system guarantees utmost film protection while extremely high shuttle speeds facilitate your daily work.



## Top Features

### Film Viewing Table

- » For 35 mm and 16 mm POSITIVE and NEGATIVE film, also shrunken material
- » Solid wooden working plate with large dimmable backlit inspection plate, working height adjustable
- » Microprocessor-controlled drive system
- » Winding with two directly driven discs with accurate tension control, A/B winding direction selectable
- » Minimized film contact with only one sprocket roll
- » Special archive mode with reduced tension and adjustable film transport for shrunken material
- » Auto-centering quick-change flanges for different film cores, with adjustment of track position for 35 mm and 16 mm films
- » Handy speed control switch for fully variable speed control from 1 fps to 24/25 fps to 300 fps (16 mm: 400 fps) and additional mode for several fixed speeds
- » Visible image at all speeds up to 300 fps (16 mm: 400 fps)
- » Electronic framing for 35 mm in perf steps
- » Frame locator function for easy and convenient scene repetition

- » Quick format change between 35 mm and 16 mm
- » Support of 24 fps / 25 fps
- » Digital film counter for frames / length / speed / time

### Scanning Unit

- » Synchronized LED RGB flash light source with 6 presets for color gamut and intensity, no heat exposure to film
- » Negative film display as positive image with correct color balance
- » Full support of viewing 3-perf film material
- » Color space: 16.7 million colors
- » 1/3" CCD camera system with video camera head and lens
- » Resolution: 480 lines
- » Movable in the x-axis and z-axis
- » Support of various video displays

### Sound Scanning Units (Options)

- » Studio quality 35 mm sound module (stereo analog) COMOPT. Actively driven and clutched flywheel for low wow and flutter at norm speed.
- » Studio quality 16 mm sound module for COMOPT and COMMAG (switchable) incl. audio delay. Actively driven and clutched flywheel for low wow and flutter at norm speed.
- » Support for digital audio conversion and export as digital audio stream

DIGITAL CINEMA  
FILM TECHNOLOGY  
STUDIO TECHNOLOGY  
CUSTOMIZED SOLUTIONS  
360° DISPLAY SYSTEMS



NEGATIVE display of NEGATIVE film



POSITIVE display of NEGATIVE film



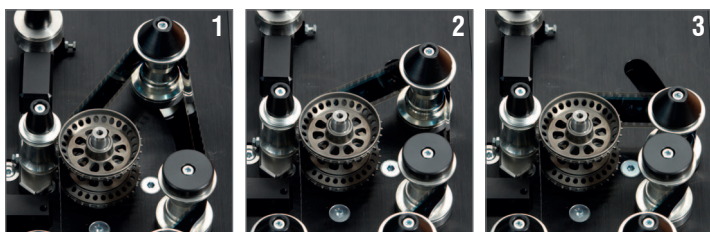
Operating panel



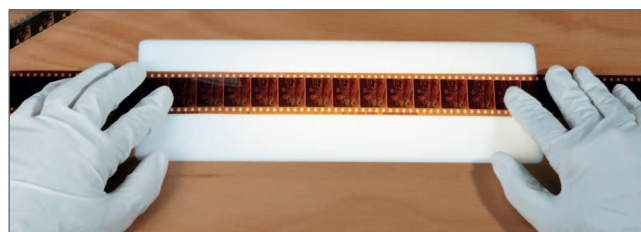
Digital film length counter



Ergonomic speed control switch



Film transport adjustment for shrunken material: variable film contact with sprocket roll (1: minimum, 2: medium, 3: maximum contact)



Backlit inspection plate

## Technical Data

<b>Mains Voltage</b>	230 V (optionally 120 V)
<b>Mains Frequency</b>	50 / 60 Hz
<b>Power Input</b>	250 VA
<b>Film Capacity</b>	<ul style="list-style-type: none"> <li>» FVT 600: 600 m (1970 ft) of 35 mm or 16 mm acetate-based film</li> <li>» FVT 1200: 1200 m (3950 ft) of 35 mm or 16 mm acetate-based film</li> </ul>

## Options

<b>Sound Scanning Units</b>	<ul style="list-style-type: none"> <li>» 35 mm sound module for stereo analog sound with red light LED and audio CCD camera</li> <li>» 16 mm sound module for COMOPT and COMMAG (switchable) including audio delay</li> </ul>
-----------------------------	---